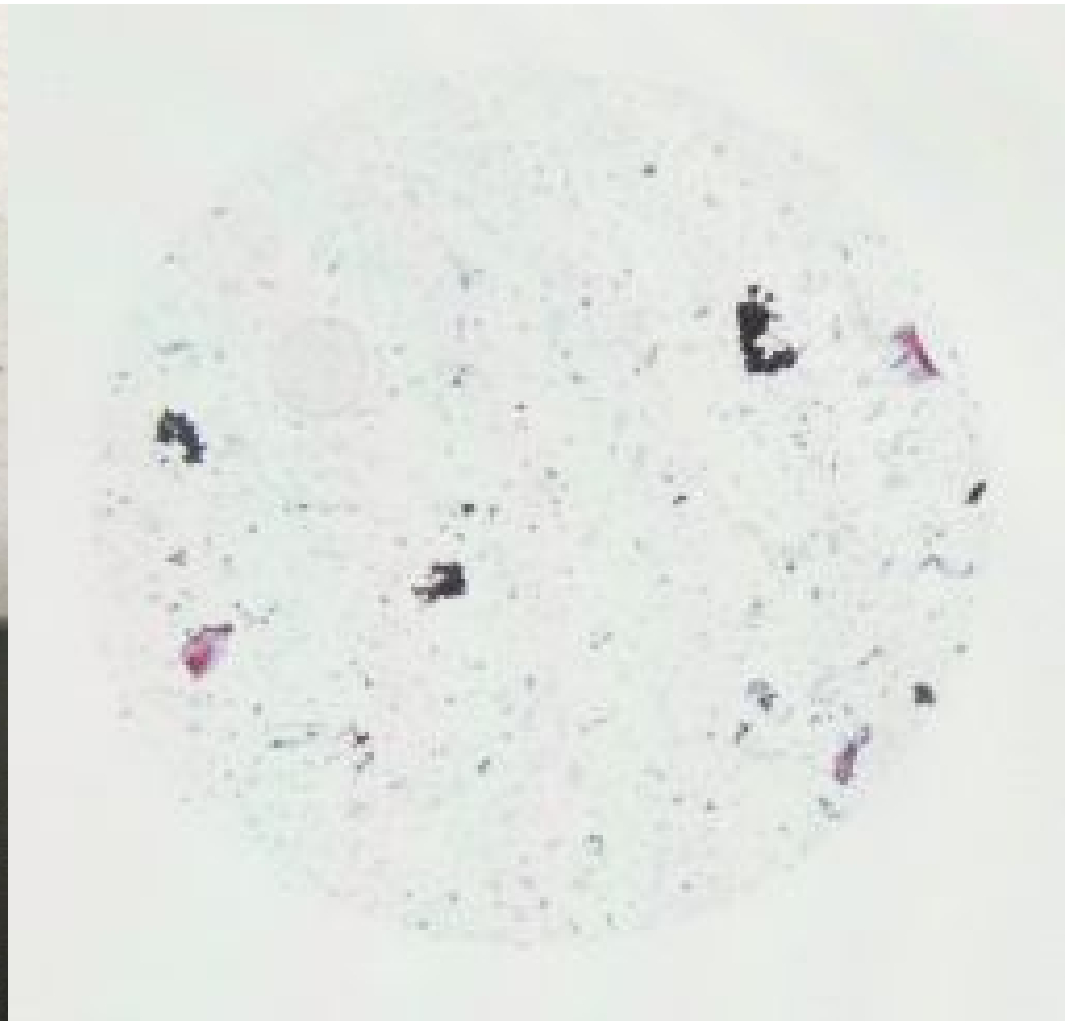
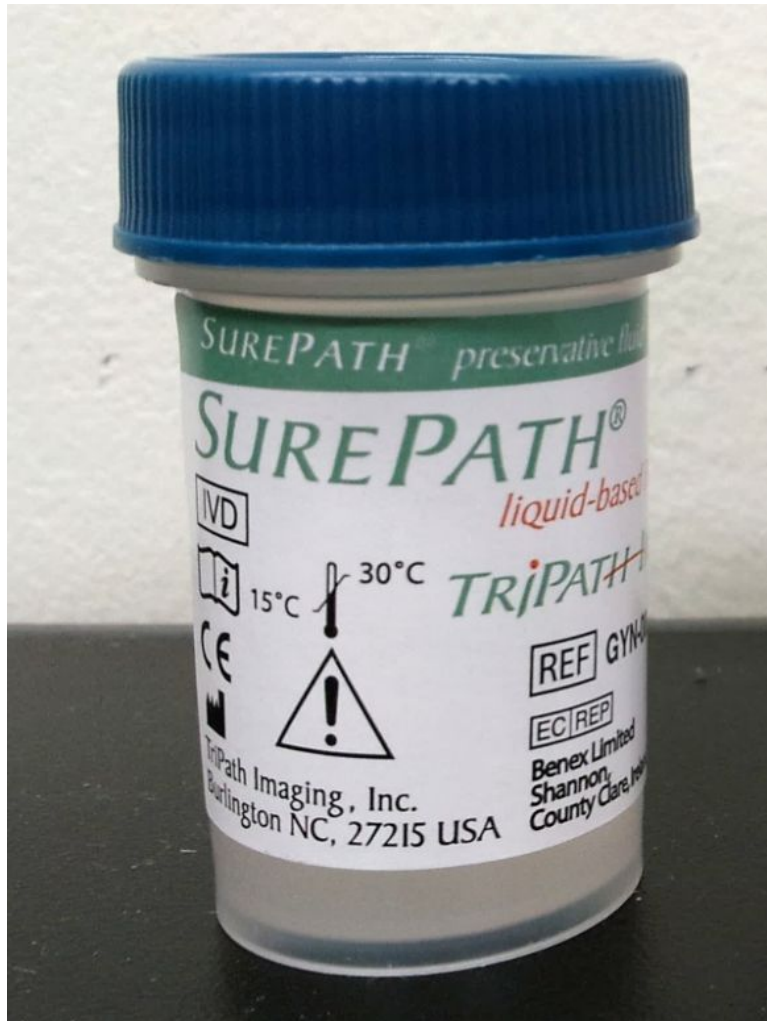


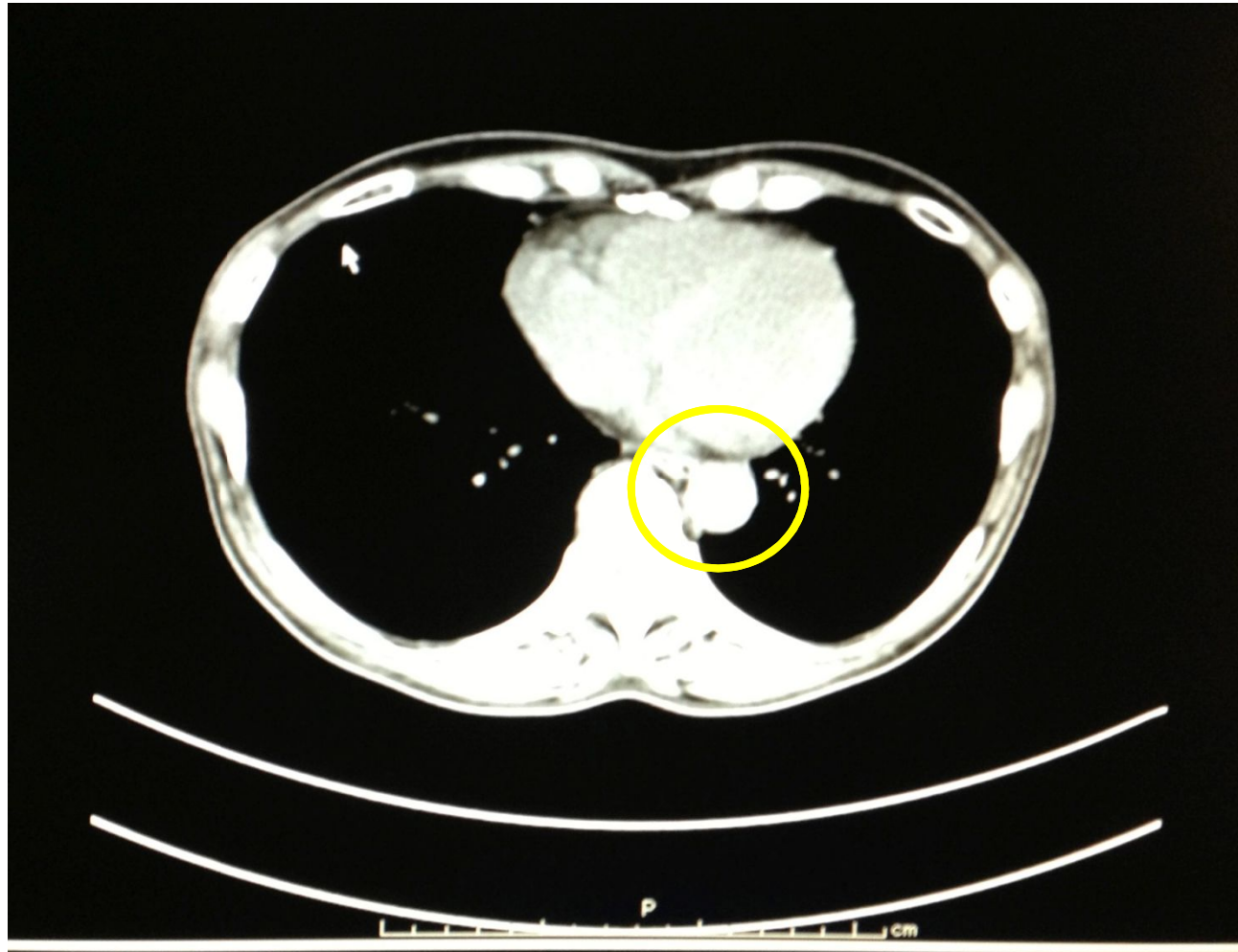
症例3

- 60歳代, 女性.
- 左副腎腫瘍を指摘.
- 既往歴: 肺癌(詳細不明).
- 腫瘍マーカー: NSE上昇(18.1ng/ml)
CEA上昇(10.0ng/ml)
- 超音波内視鏡下穿刺吸引細胞診(EUS-FNA)
- 標本: BDシュアパスLBC

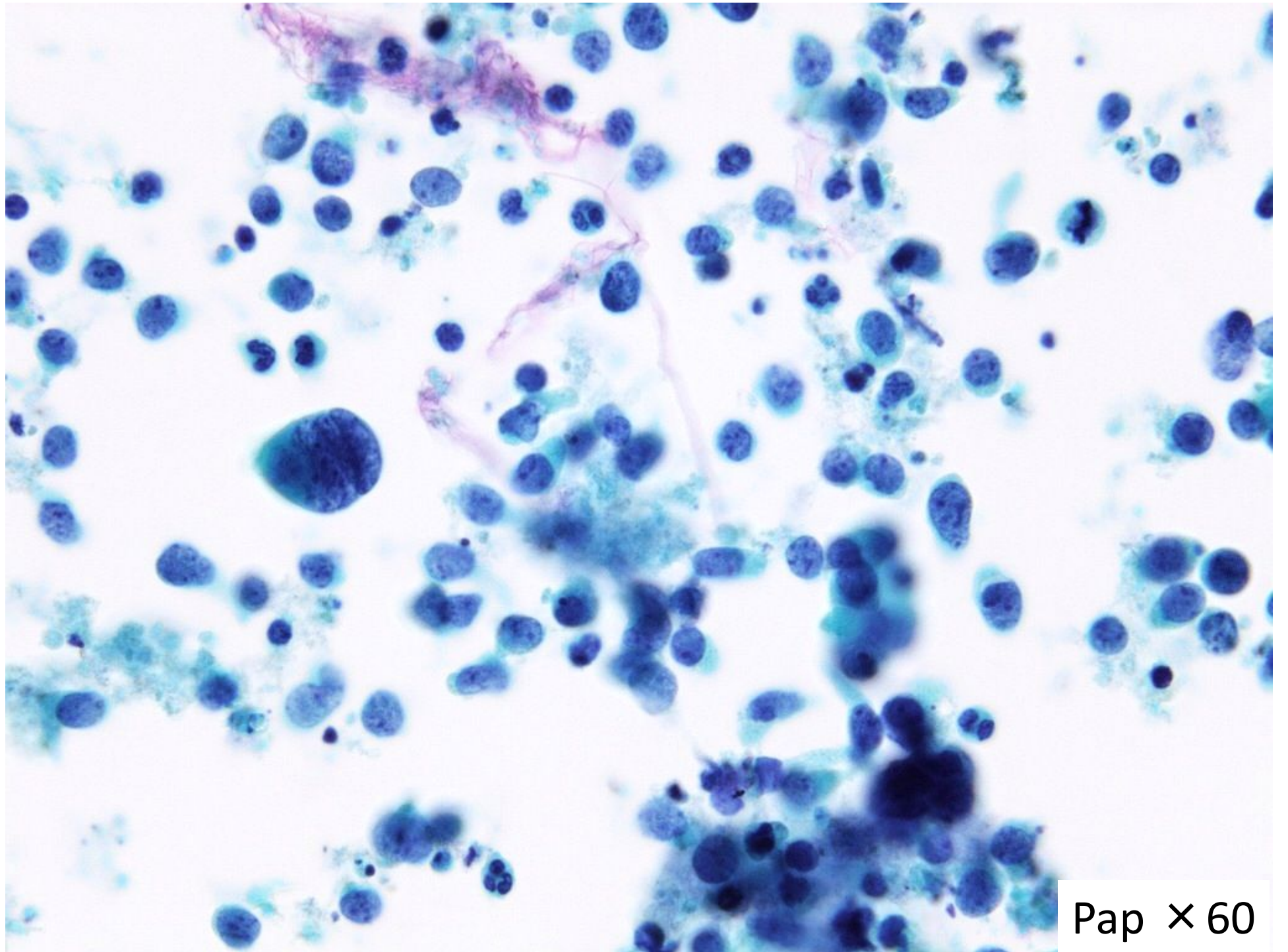
副腎腫瘍EUS-FNA



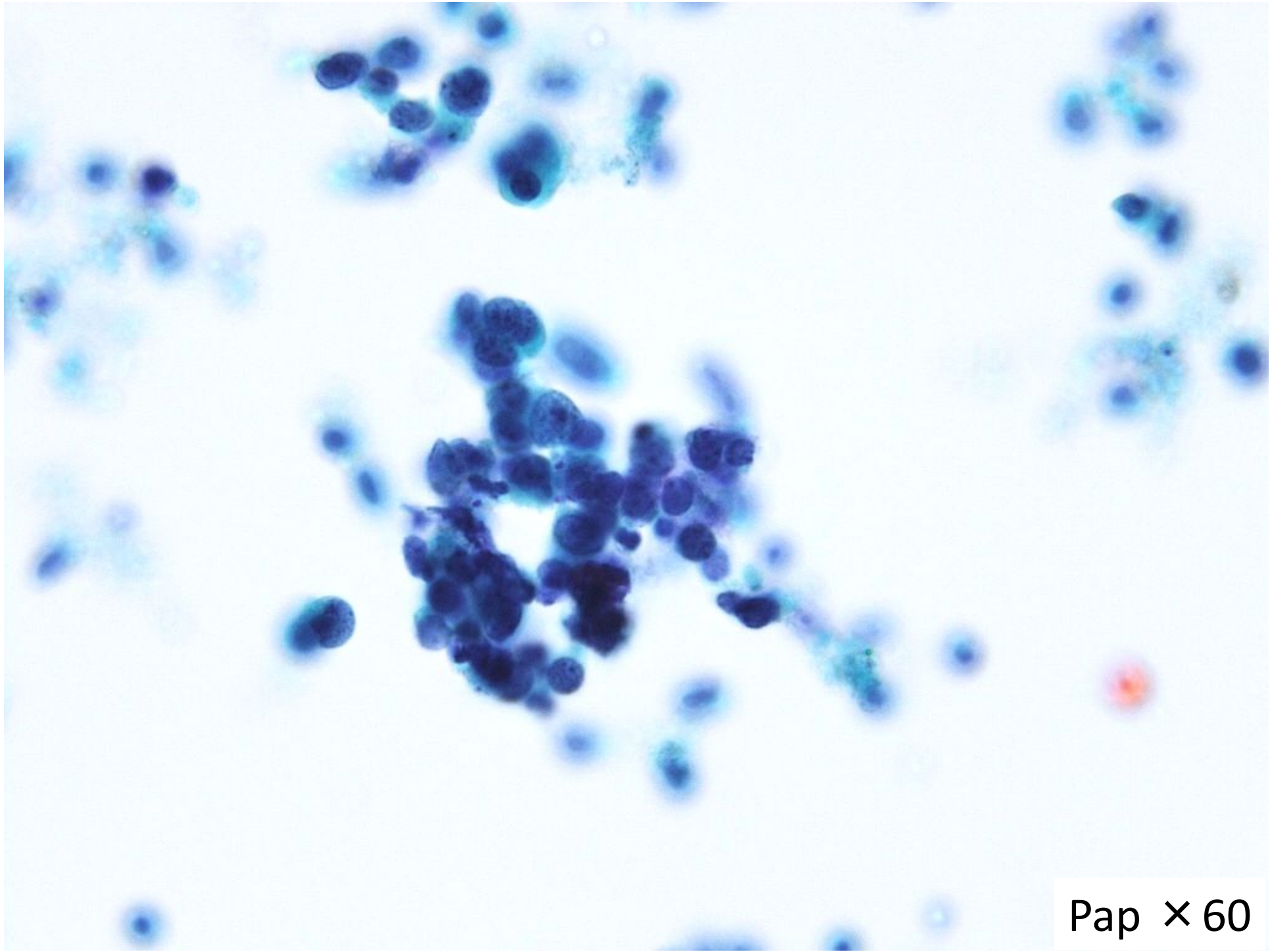
CT画像



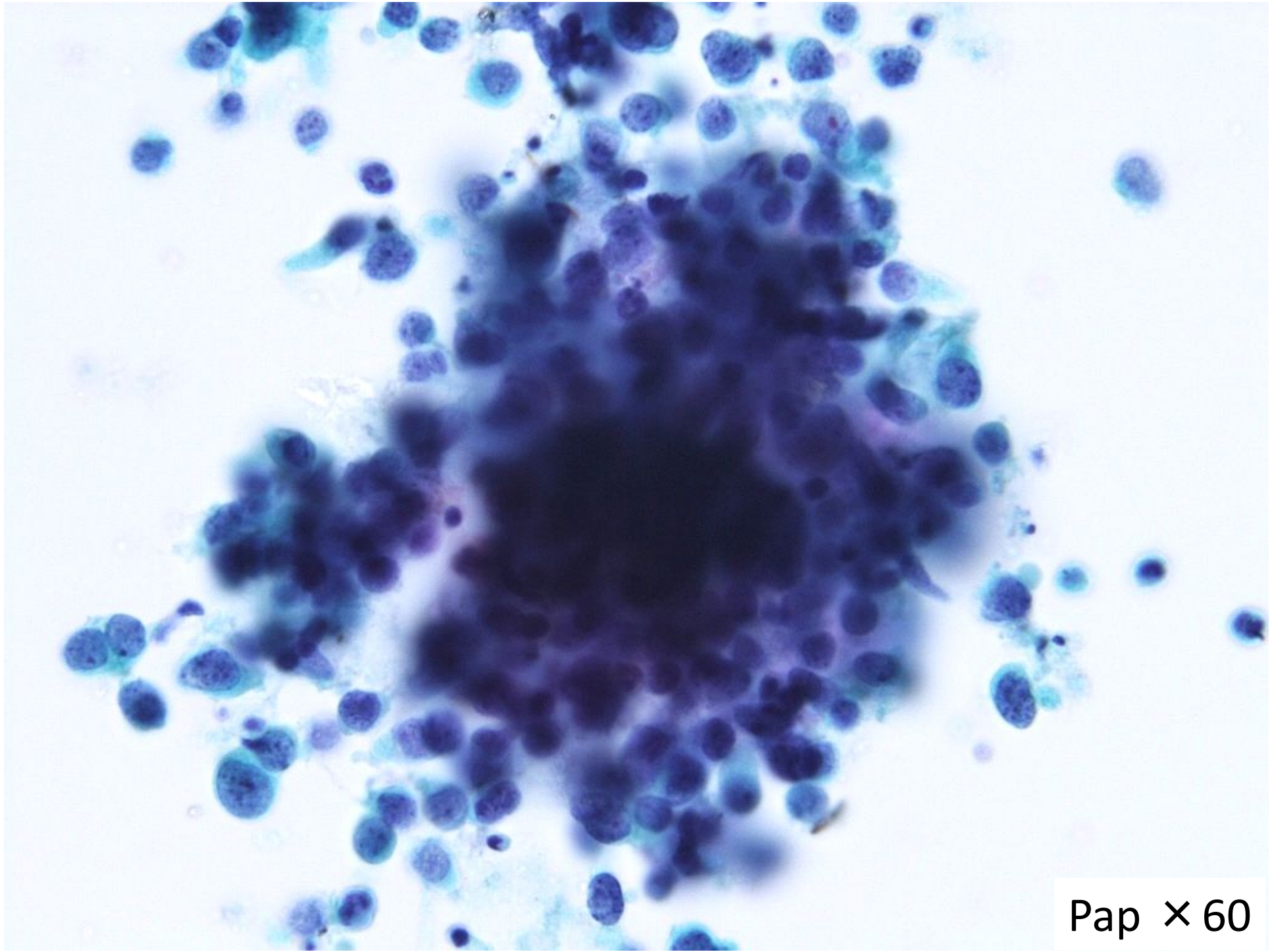
左副腎に2cm大の充実性腫瘍



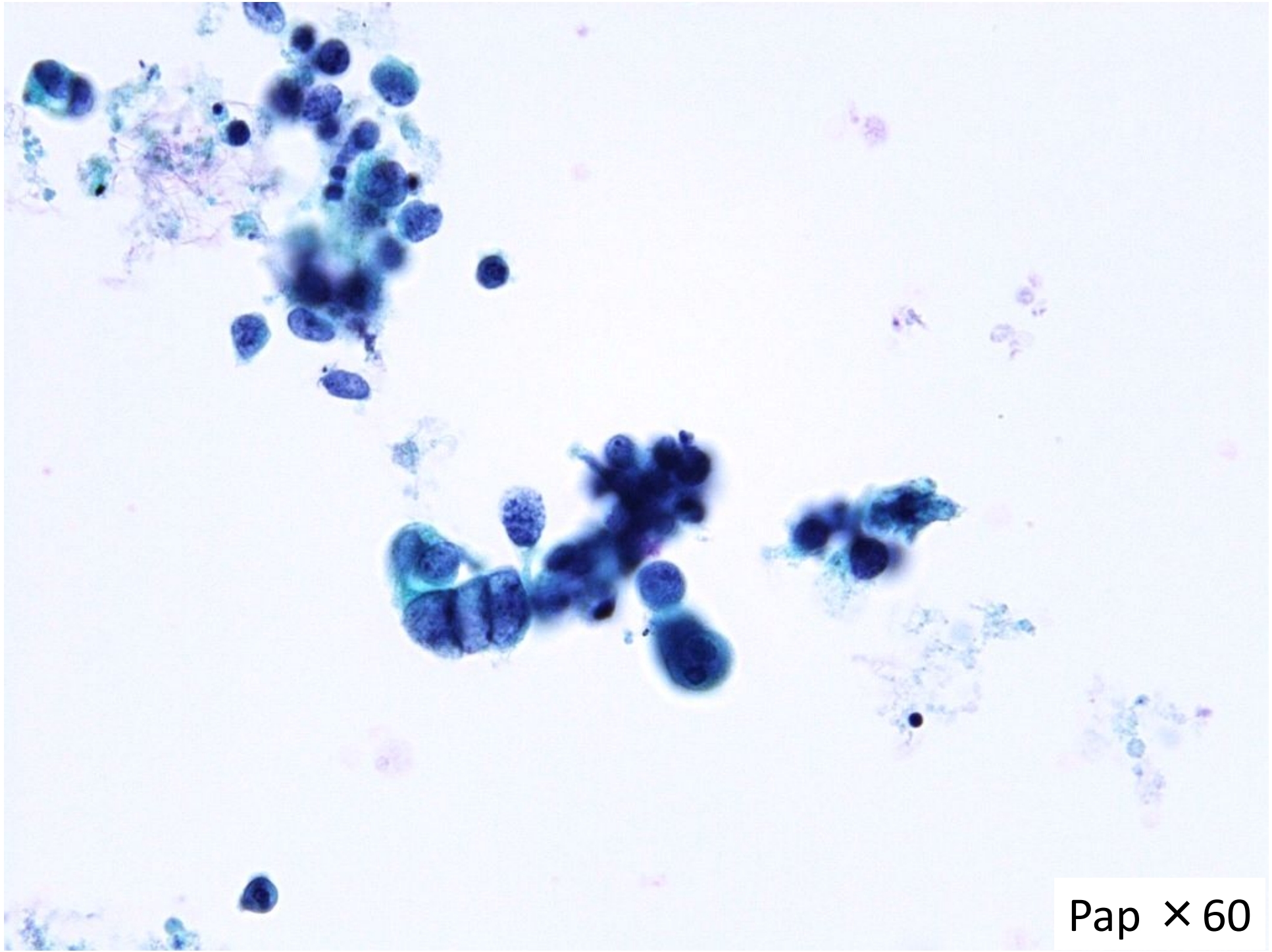
Pap × 60



Pap × 60



Pap × 60



Pap × 60

選択肢

- ① 褐色細胞腫
- ② 悪性リンパ腫
- ③ 明細胞腺癌
- ④ 神経内分泌癌
- ⑤ 高分化型腺癌