

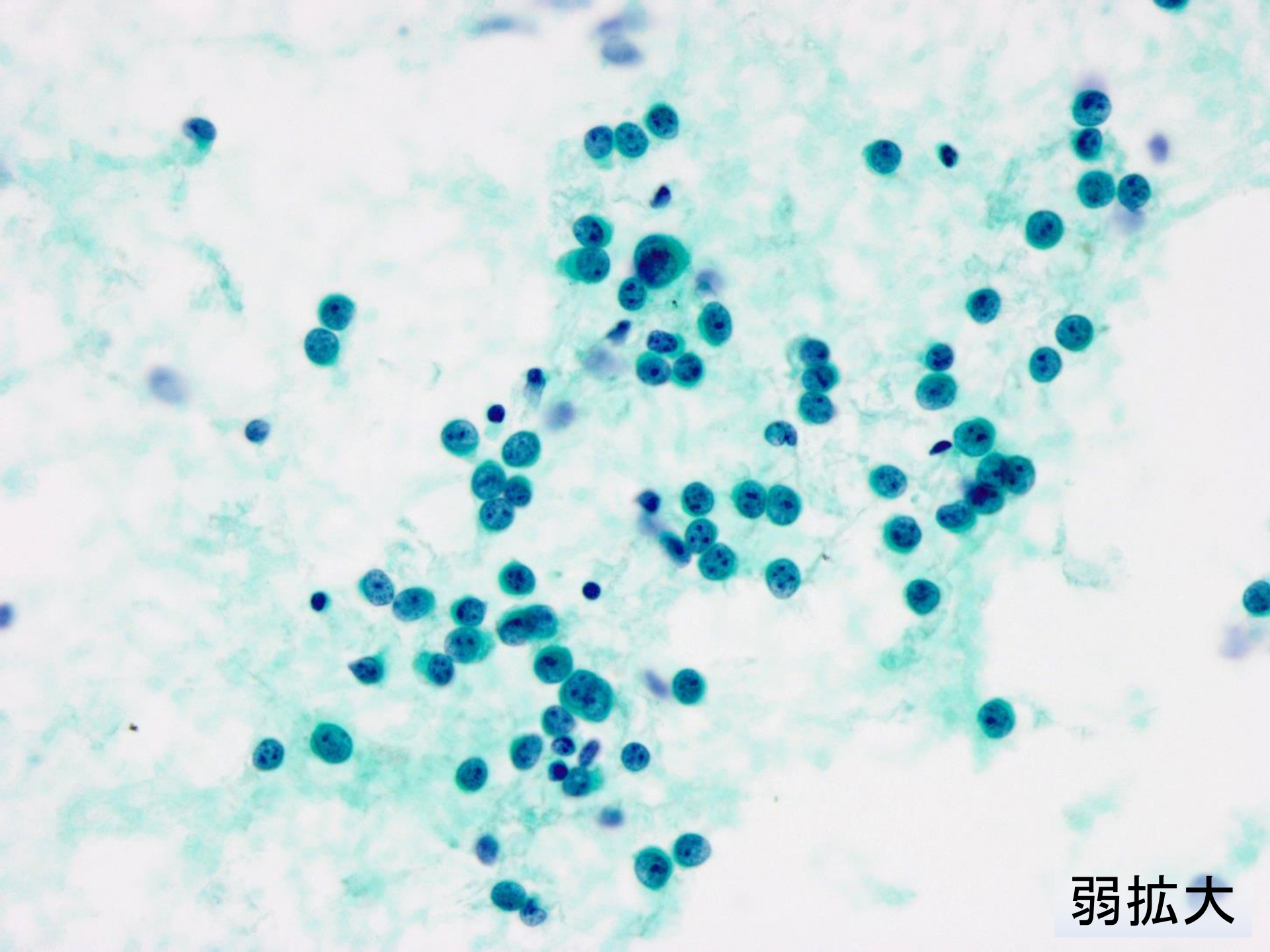
症例4 消化器

症例：30歳代 女性

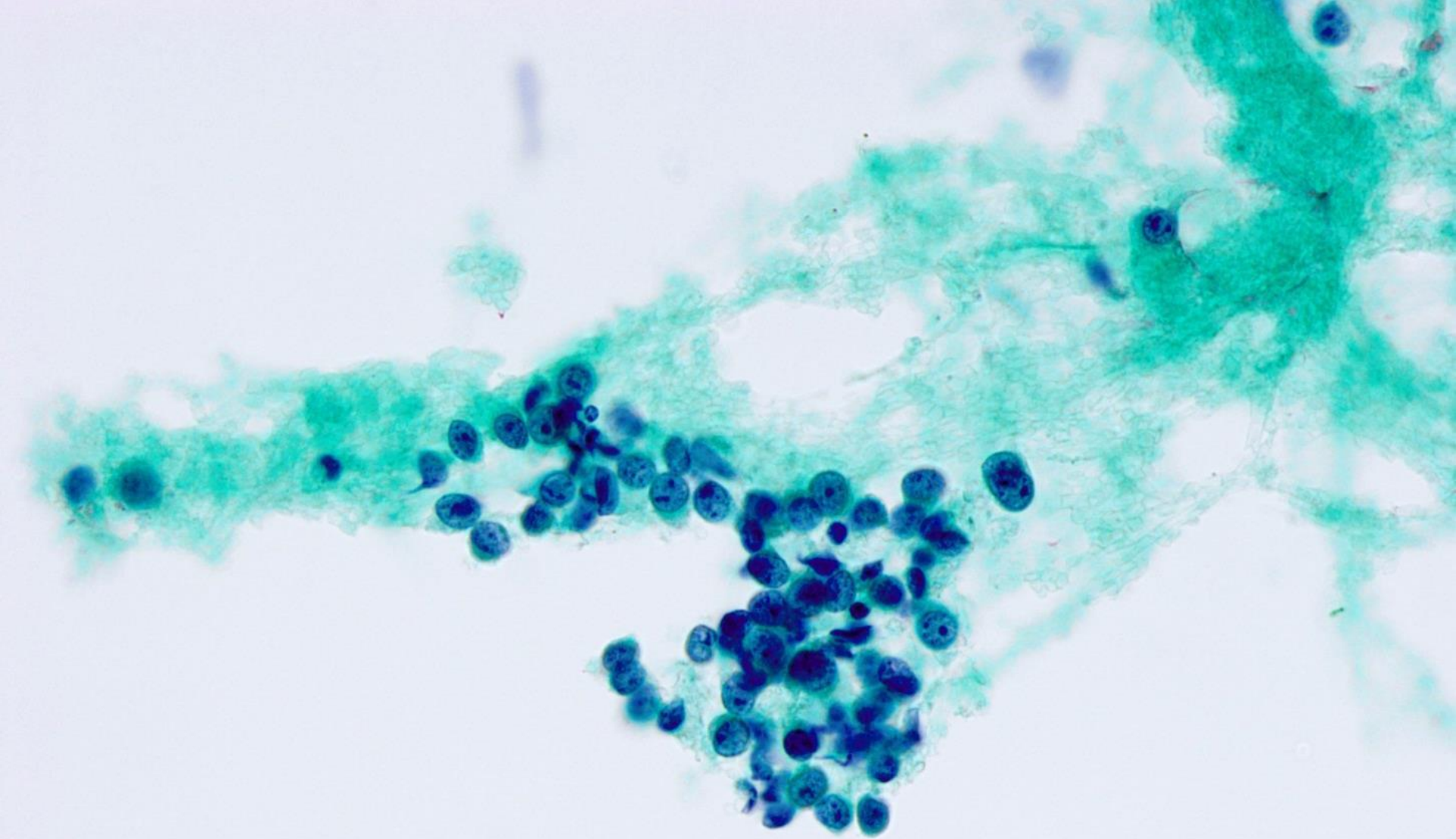
主訴：検診エコーにて膵体部～尾部に
かけて50mm大の充実性腫瘍
指摘

採取部位：膵尾部

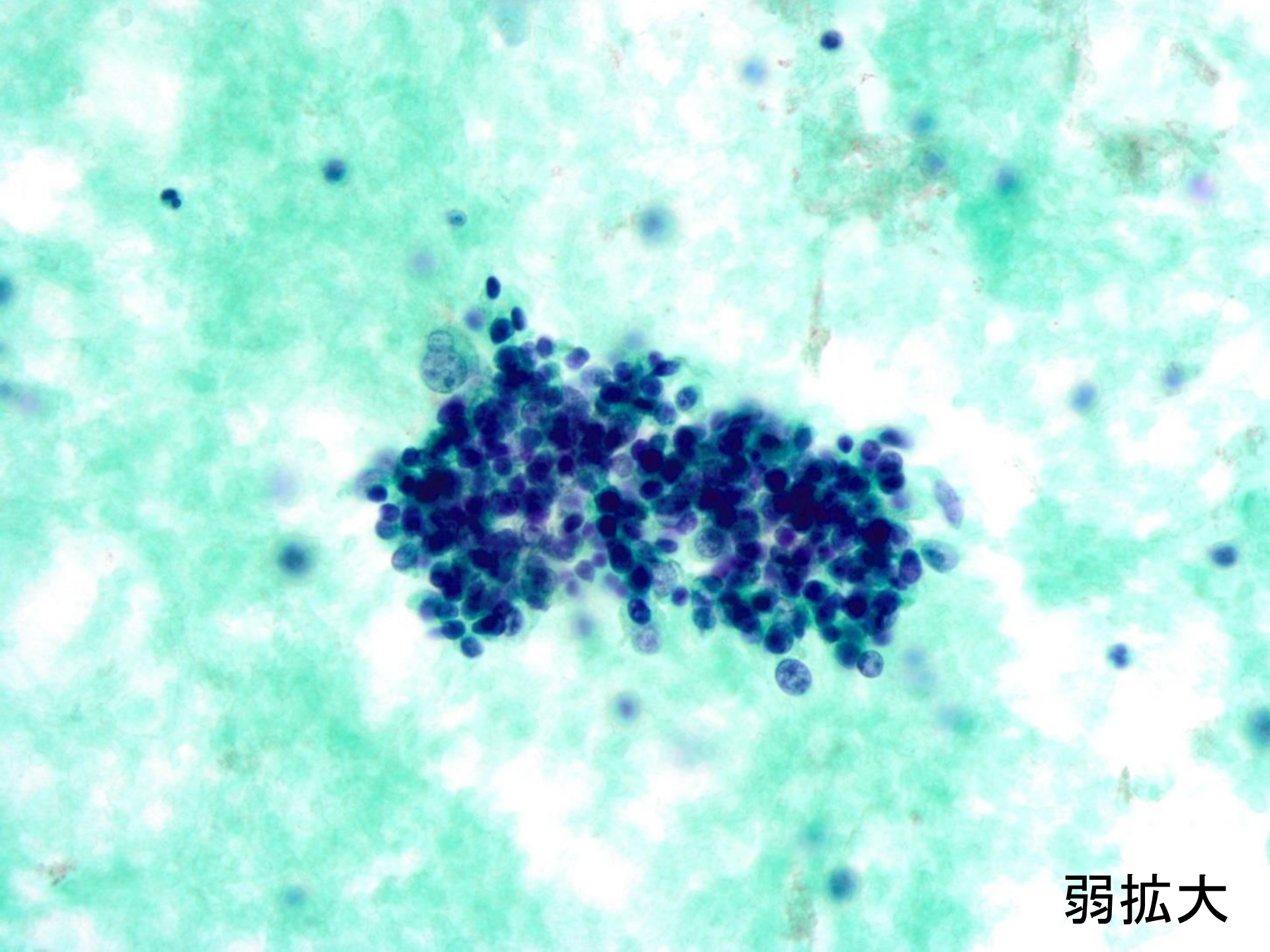
採取法：EUS-FNA



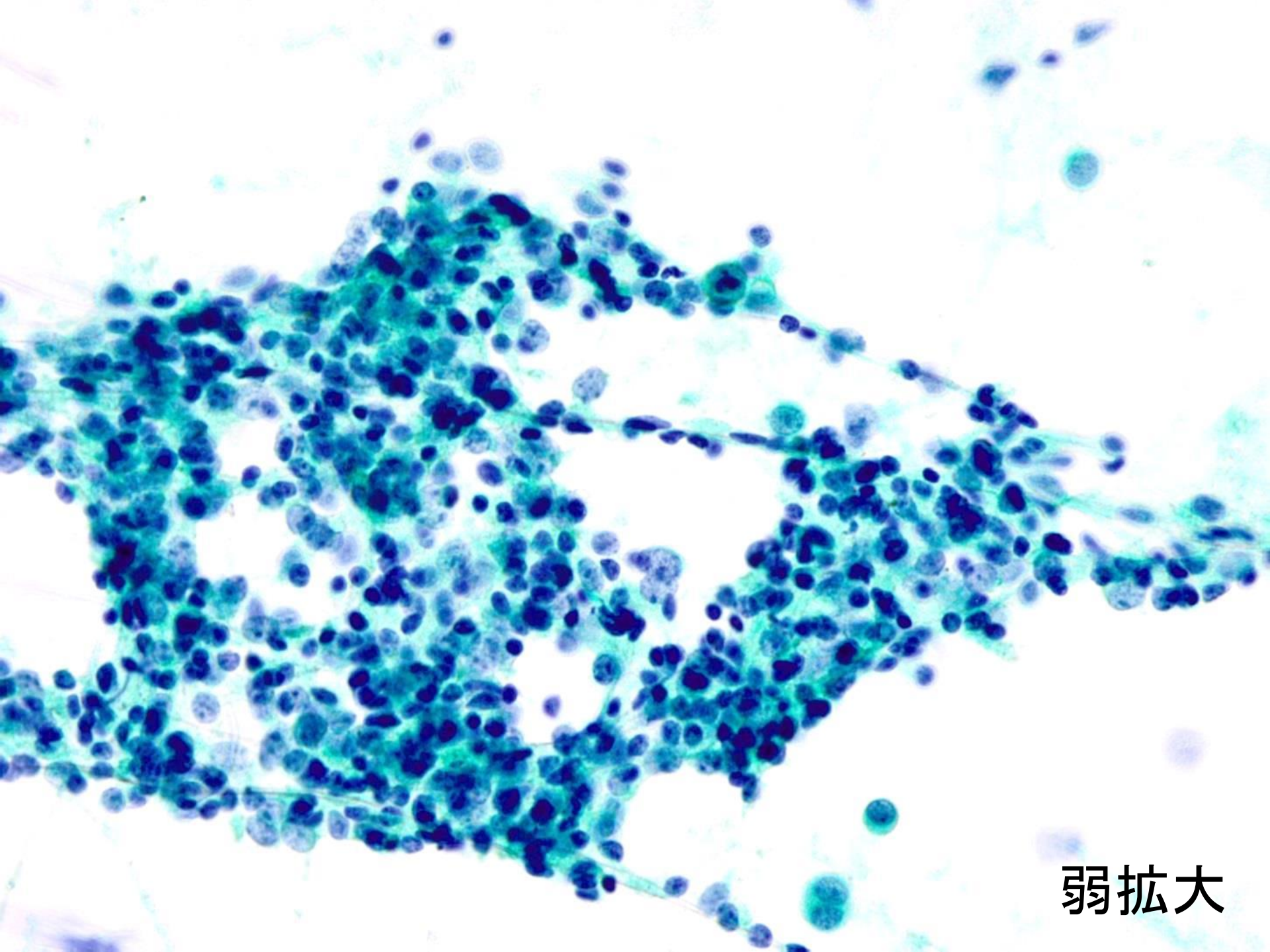
弱拡大



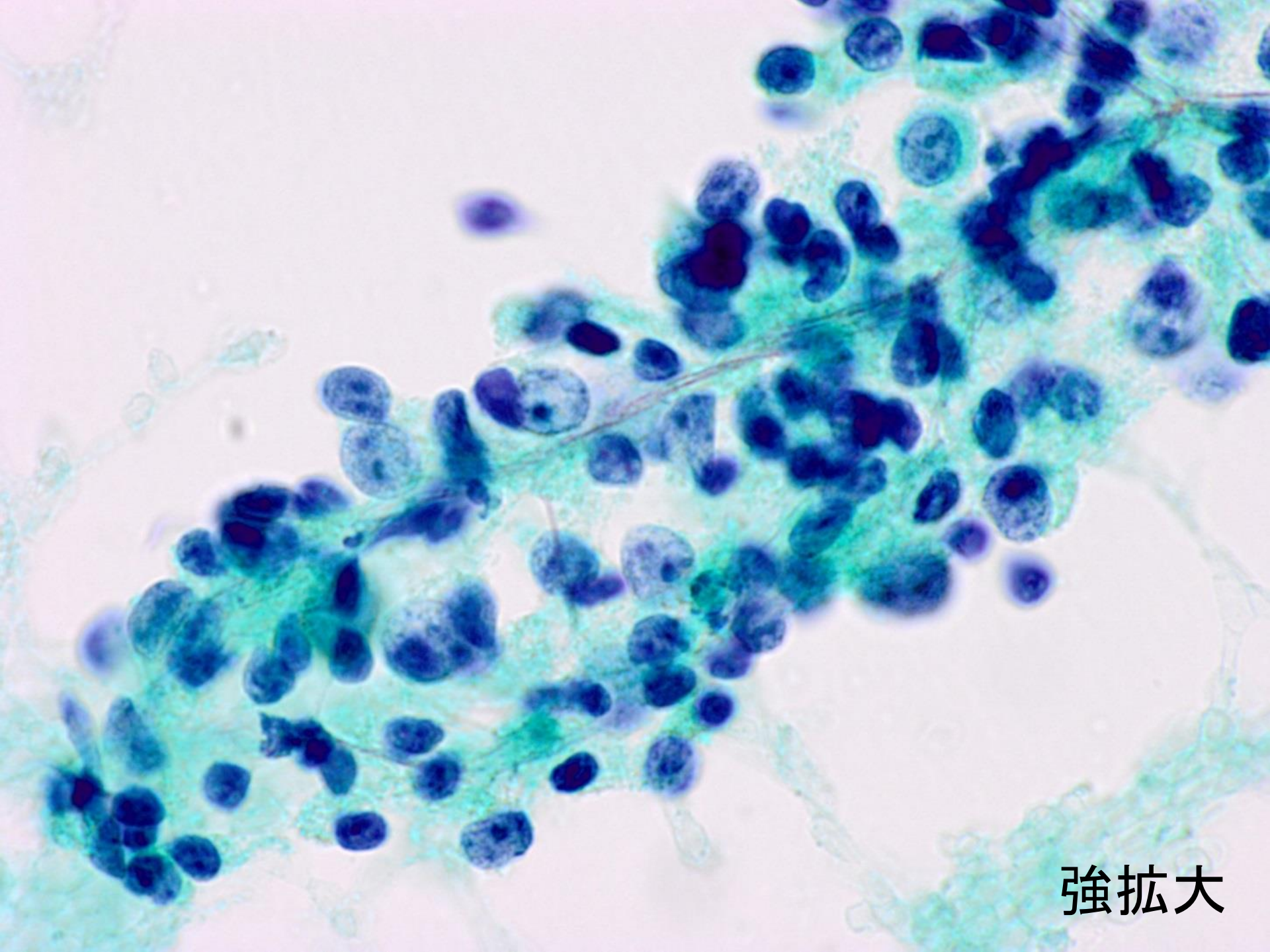
弱拡大



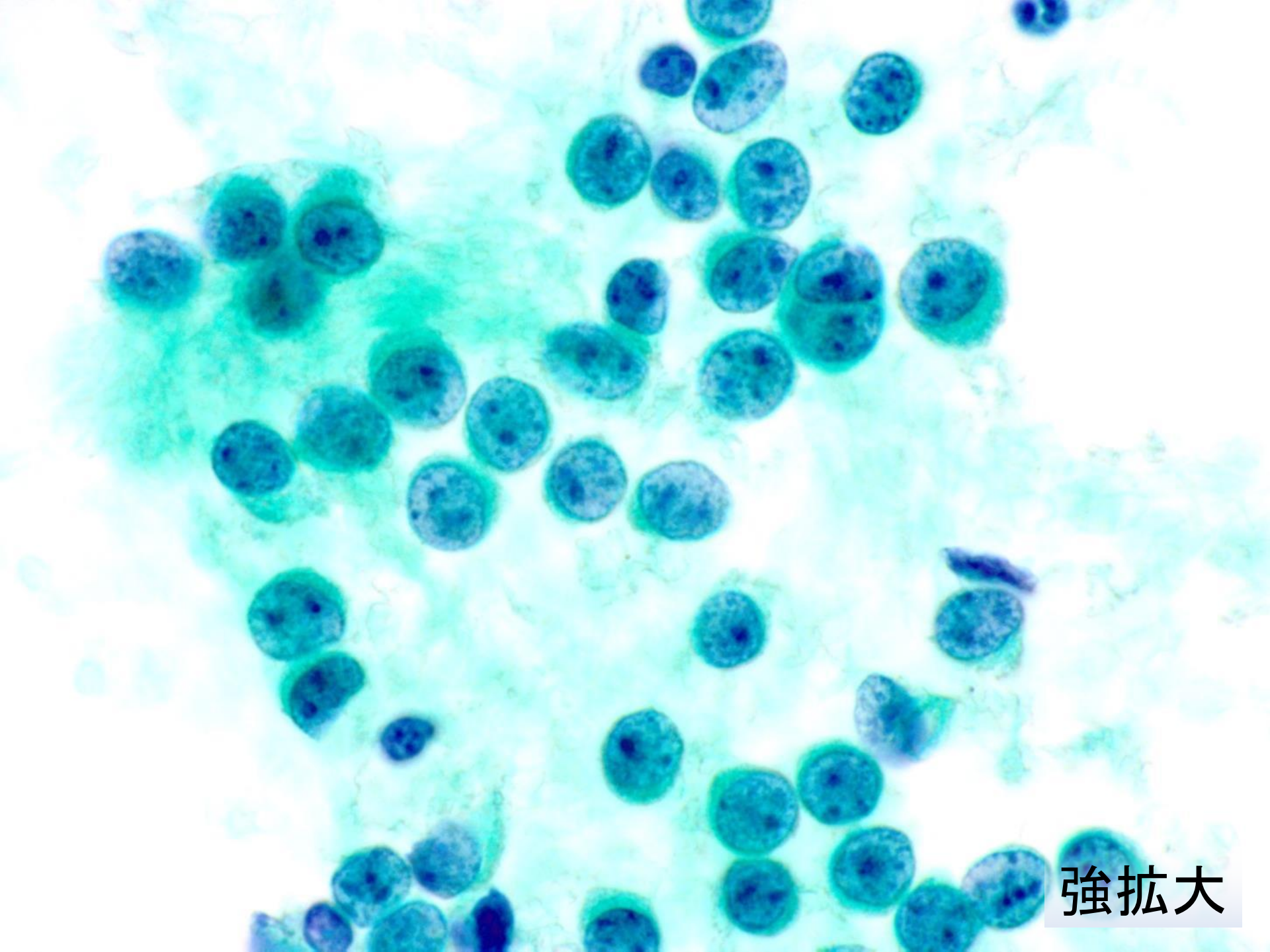
弱拡大



弱拡大



強拡大



強拡大

選択肢

- ① 悪性リンパ腫
- ② 浸潤性膵管癌
- ③ 神経内分泌腫瘍 (NET)
- ④ 膵内副脾
- ⑤ Solid-pseudopapillary neoplasm (SPN)