

病例3 甲状腺

症例3

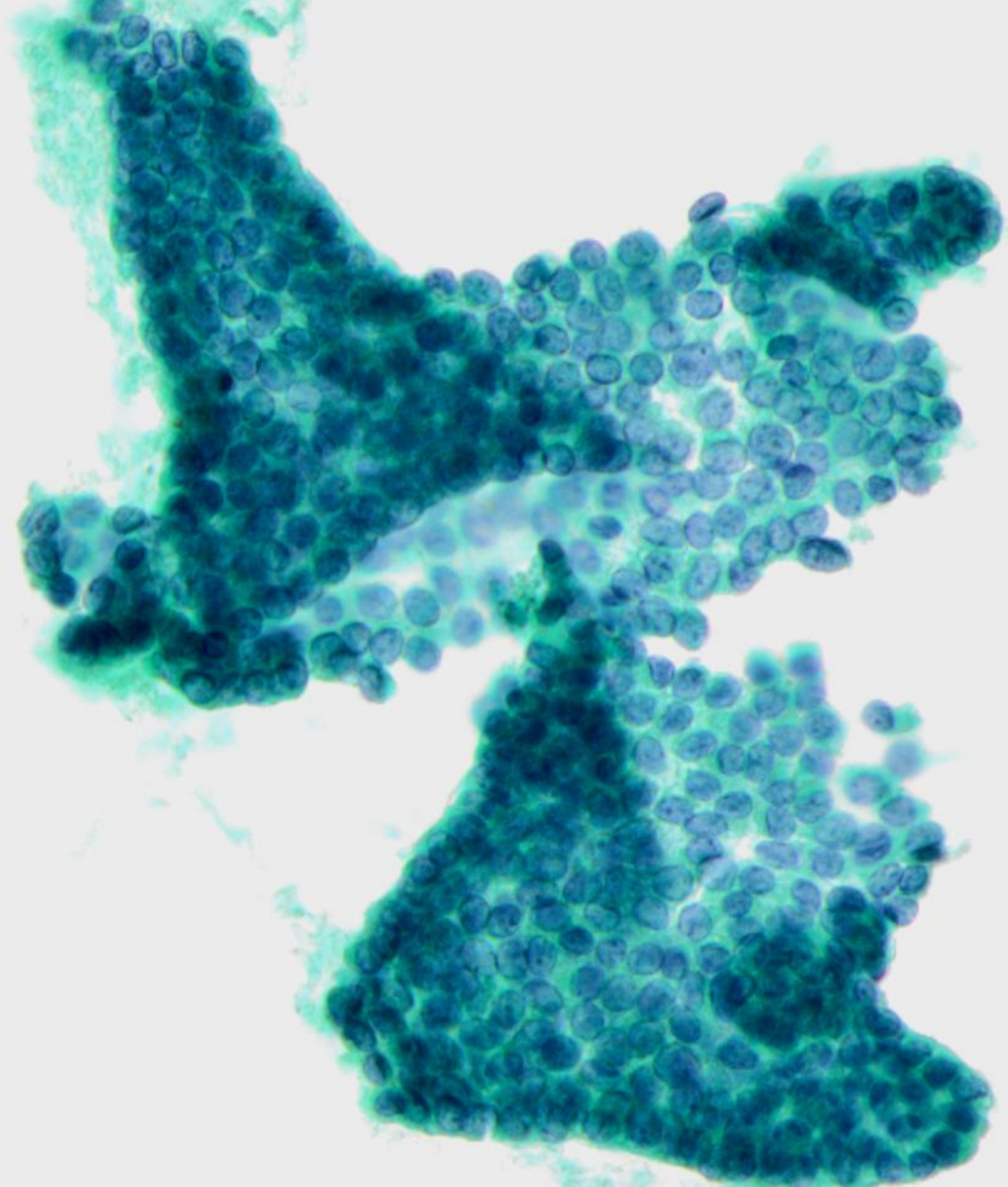
①患者:40歳代 女性

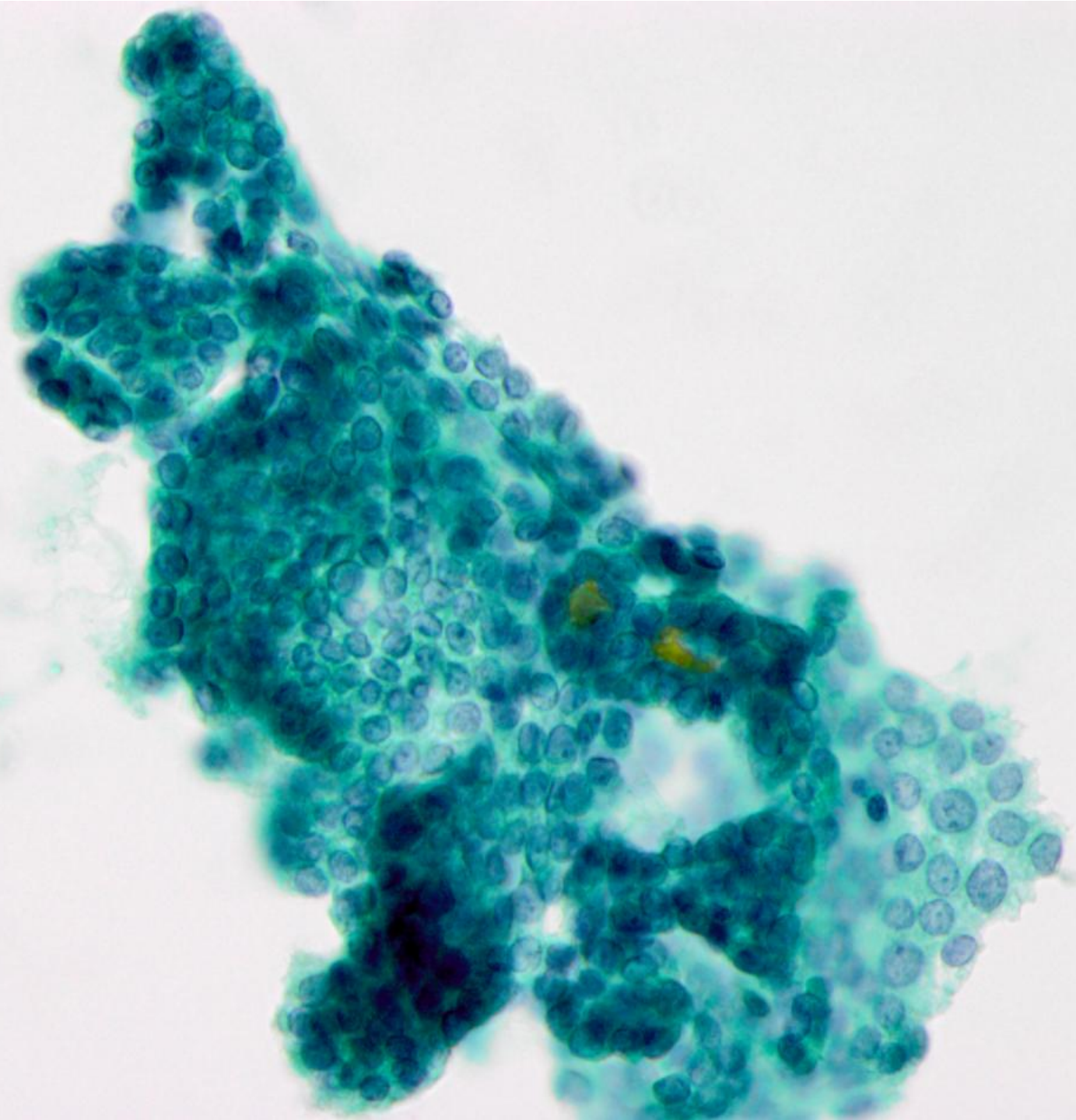
②採取部位・採取方法:左甲状腺左葉 穿刺吸引細胞診

③経緯:人間ドックにて甲状腺腫瘍指摘

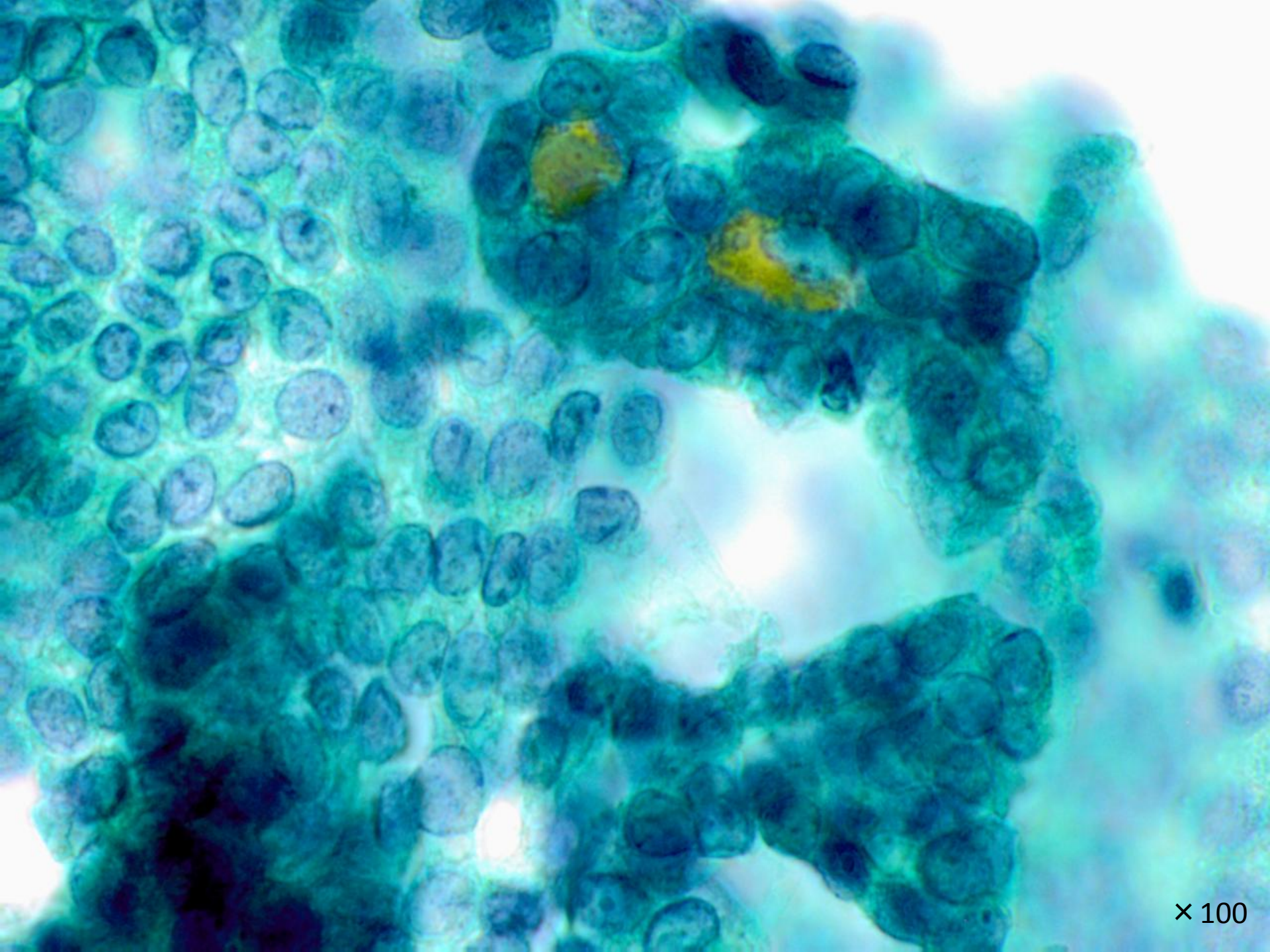
エコーにて左葉に20×33mmの境界明瞭、内部は比較的均一で高エコー

頸部CTにて被膜様構造への腫瘍浸潤やリンパ節転移は指摘できない

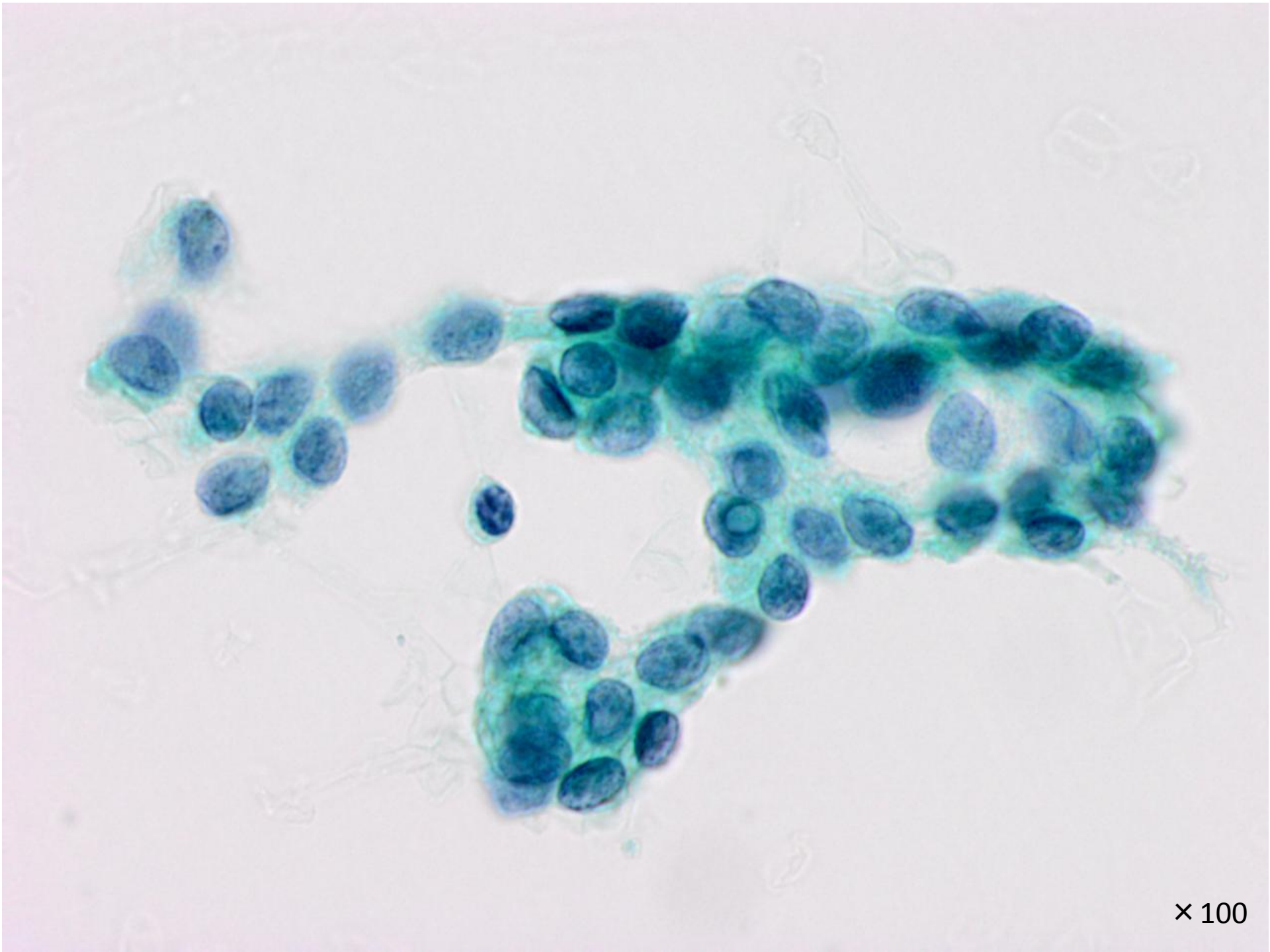




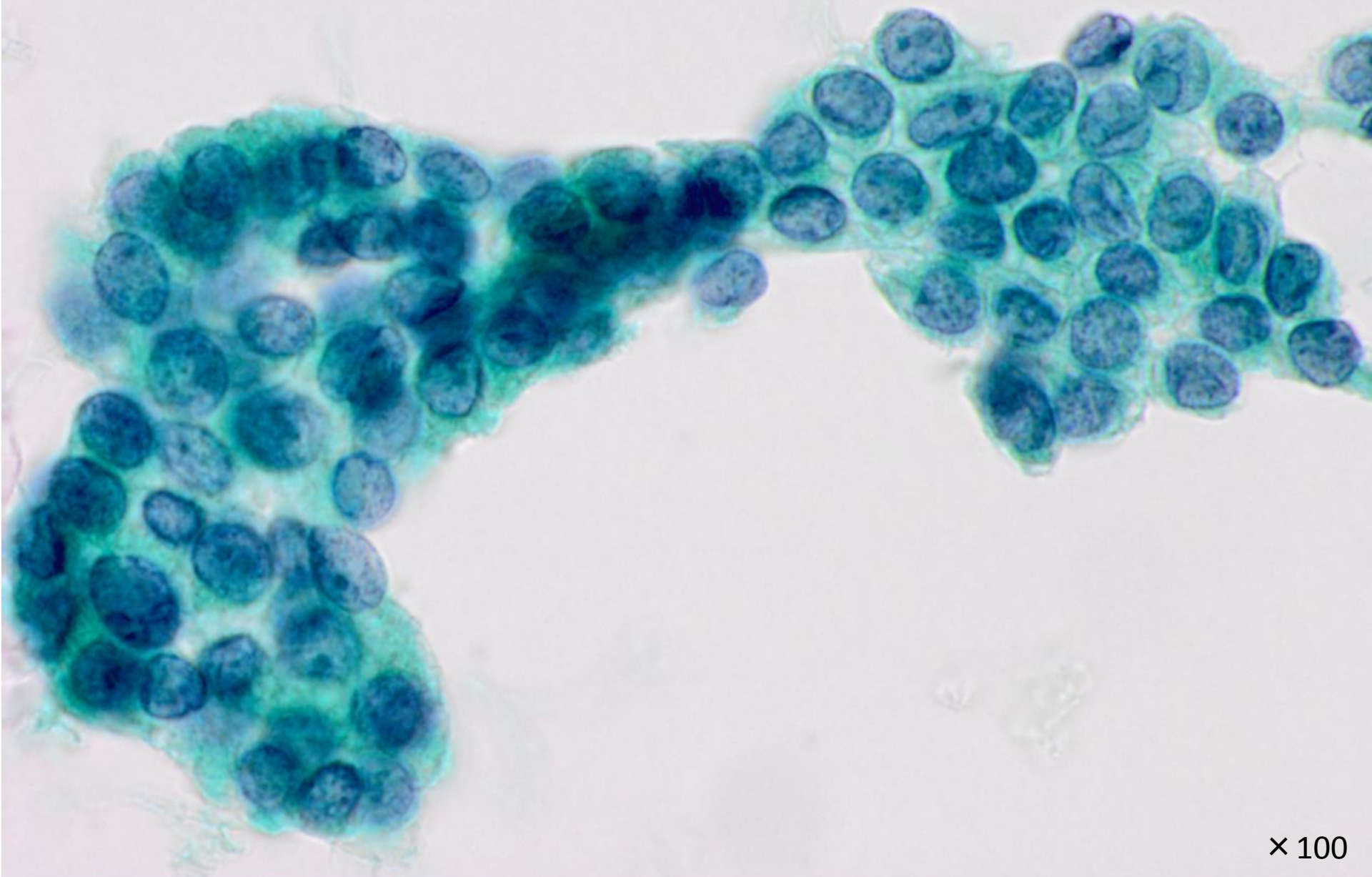
× 40



× 100



× 100



× 100

選択肢

1. 腺腫様甲状腺腫 (Adenomatous goiter)
2. 濾胞性腫瘍 (Follicular neoplasm)
3. 濾胞型乳頭癌 (Papillary carcinoma, follicular variant)
4. 髓様癌 (Medullary carcinoma)
5. 低分化癌 (Poorly differentiated carcinoma)